

SWEATSHIRT PROJECT

DRISHTI BHARGAVA



MY STORY

THIS IS AN EPISODE FROM MY NIGHTMARES. AS AN ARTIST, BEST WAY TO POUR MY HEART WAS THROUGH MY WORK SO I CHOSE TO TAKE DARK BLUE/BLACK AS MY COLOUR TO SHOW MY STORY. THIS IS MY STORY, MY JOURNEY FROM MY SIGHT.

CONTENT

MY STORY
MOODBOARDS
INTRODUCTION - FABRIC TESTS
INTRODUCTION - DECLINATIONS
ILLUSTRATOR INSPIRATION
FINAL SILHOUETTE
TECHNICAL SHEET



SUFFOCATION
SUFFOCATION

MY STORY

PANTONE
532 CP

PANTONE
533 CP

PANTONE
648 CP

PANTONE
654 CP

PANTONE
653 CP

PULL ME OUT

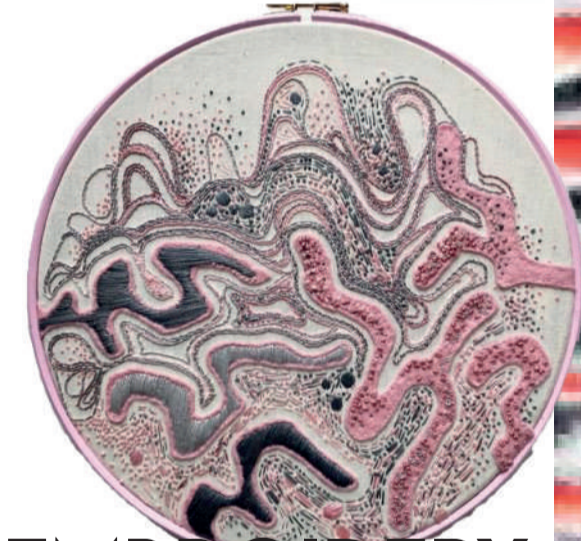
DON'T

WHY M'I STUCKKKKKKKK...





RIBBED

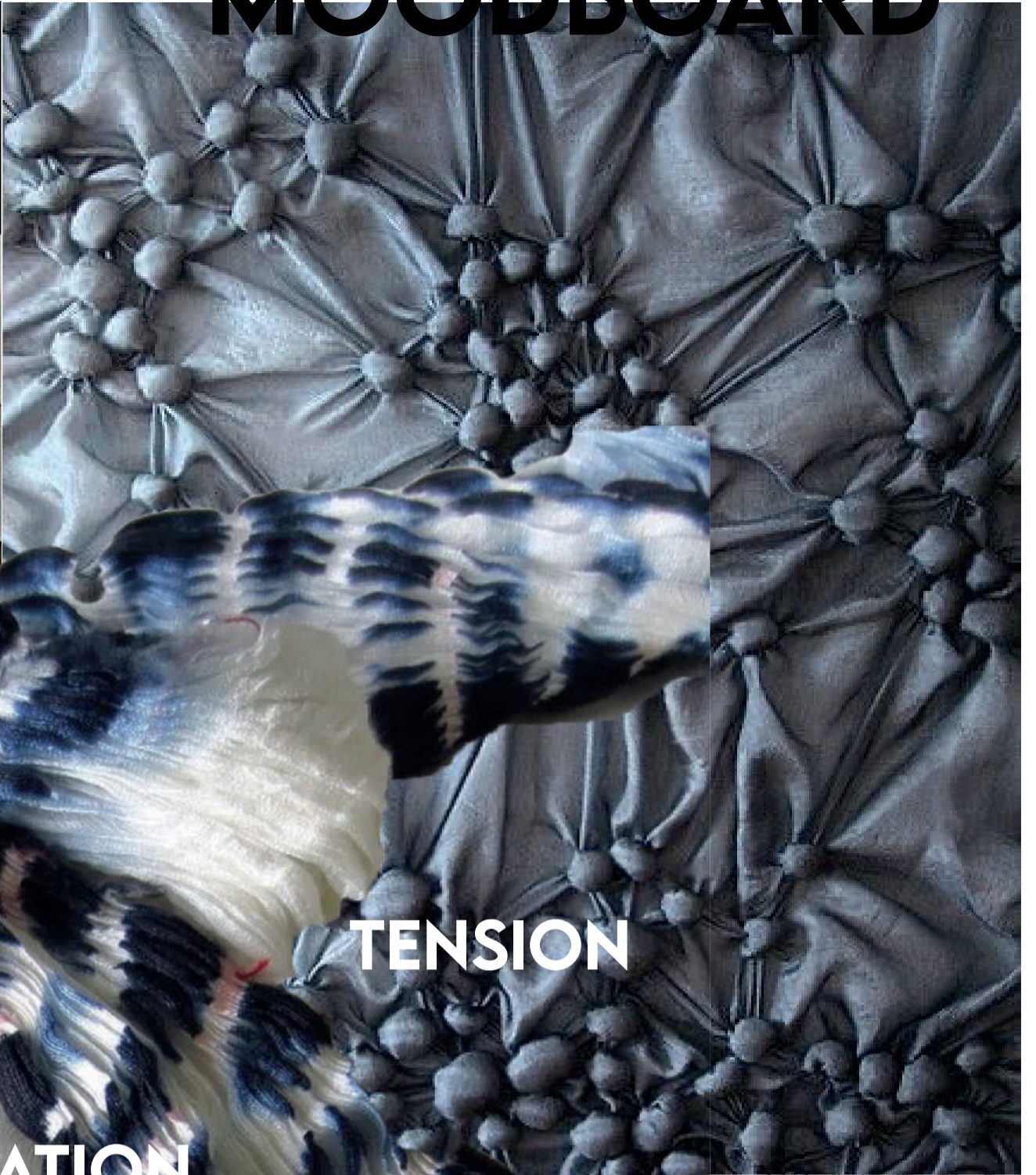


EMBROIDERY



KNITTING

MOODBOARD



TENSION



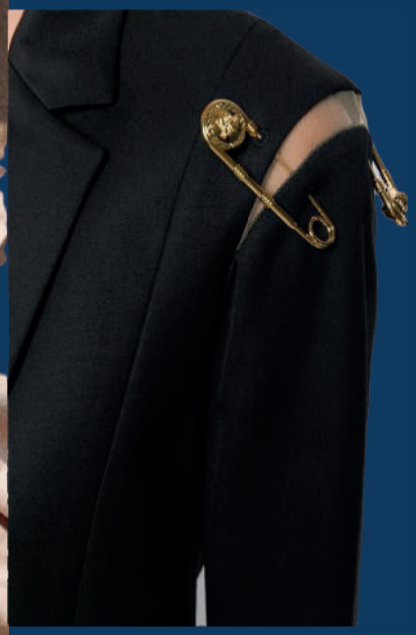
SHIBORI MANIPULATION



TIE AND DYE



RUCHED EFFECT/PLEATING



MOODBOARD



FABRIC EXPERIMENTS

*AS MY INSPIRATION IS SUFFOCATION,
I WENT FOR SHIBORI MANIPULATION,
TIE AND DYE AND EMBROIDERY.*

*SHIBORI MANIPULATION IS A
JAPANESE TECHNIQUE AND TIE DYE
IS FROM INDIA. I HAVE PRACTICED TIE
DYE BEFORE, IT USED TO BE
INCREDIBLY FUN, TYING THE FABRIC
TIGHTLY FROM RANDOM SPOTS AND
WAIT FOR THE RESULTS AND I
ENJOYED IT AGAIN.*

**I CHOSE THIS
AS MY FINAL
FABRIC WORK
BECAUSE THIS
WAS MORE
RELATABLE TO
MY STORY.**

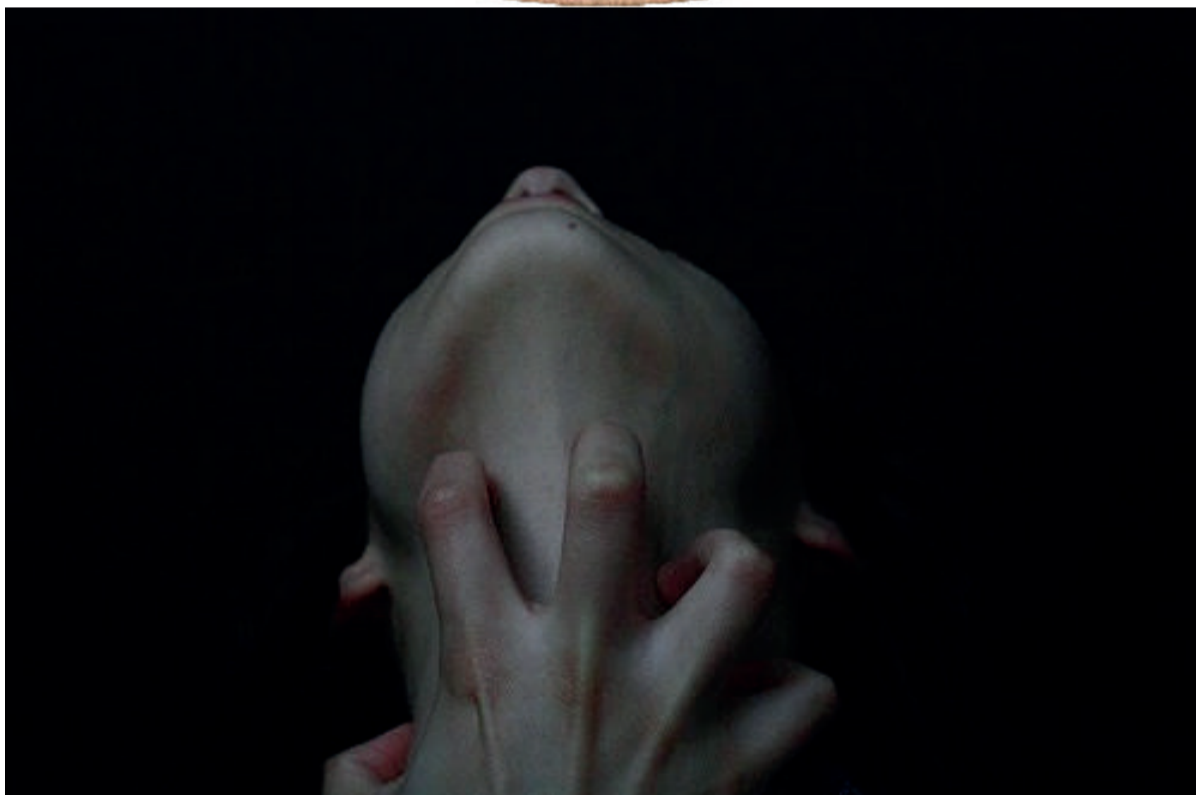




**I TRIED TIE
AND DYE ON
BLUE FABRIC
BECAUSE MY
COLOUR WAS
BLUE, THE RE-
SULT WASNT
THAT GREAT
AS IT WOULD
HAVE BEEN
ON WHITE
FABRIC.**



**I TRIED EM-
BROIDERY TO
SHARE MY
STORY IN A
MORE DIRECT
WAY THAN
ABSTRACT,
BUT IT DIDN'T
WORK OUT
FOR ME.**



DECLINATIONS

MY MAIN INSPIRATION BEHIND MY SWEATSHIRT DECLINATIONS WAS GATHERINGS, MOSTLY FOCUSED NEAR THE NECK AND GRADIENTLY GOING DOWN AS YOU REACH THE WAIST OR JUST FOCUSED NEAR THE NECK LIKE A CHOKER. I WANTED TO KEEP MY SWEATSHIRT SHORT SO THE EFFECT DOESN'T LOSE ITS EFFECT AND I ALSO PLAYED WITH THE FLOW OF THE LENGTH TO EITHER LEAVE IT LOOSE ON THE HEM OR TIGHTER ON THE WAIST. I EXPERIMENTED WITH EYELETS TOO.





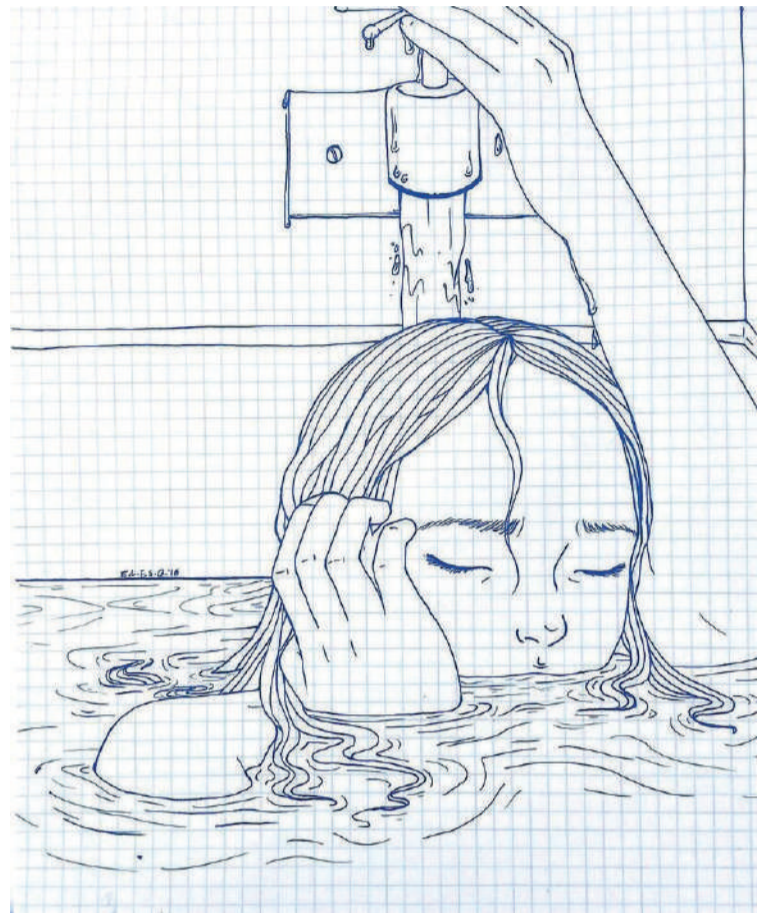
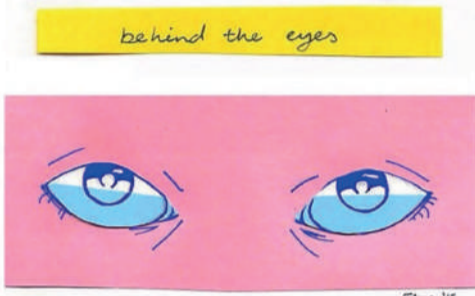
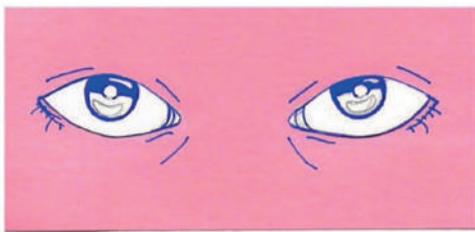


ILLUSTRATOR INSPIRATION

*- ELLIANA ESQUIVEL -
SHE DOODLES HER THOUGHTS, SOME
OF HER SKETCHES WERE VERY MOV-
ING FOR ME. HER DOODLES WERE IN-
SPIRING AND HELPS ME RELATE TO MY
STORY IN A MORE SIMPLER WAY THAN
DRAMATIC.*



- Blindsided -



BAD BLOOD



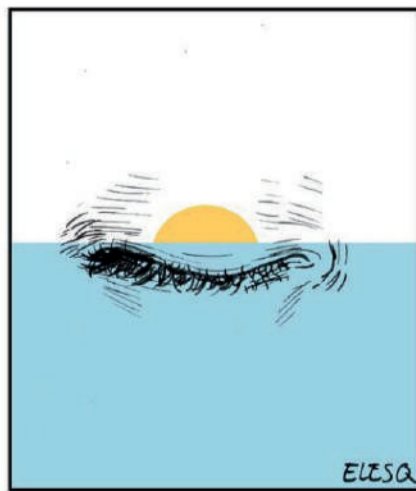
"OH WELL" rolling with punches should be its own major.

THE CHAOS

THE CALM

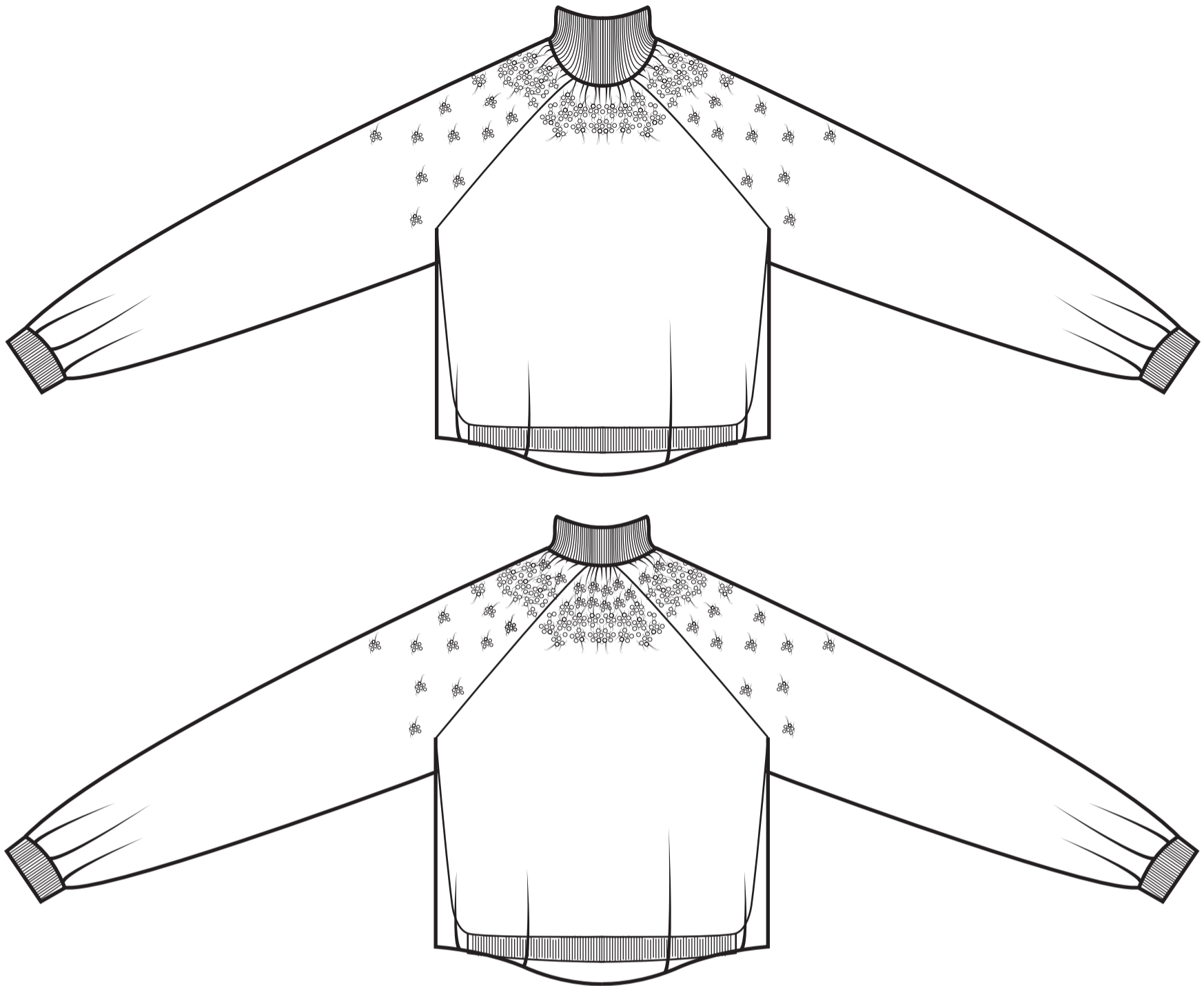


sun's in my eyes.



DON'T MELT

FINAL SILHOUETTE



DESCRIPTION

- SUFFOCATION -

- *VOLUME - INNER LAYER IS FITTED TOWARDS THE WAIST AND OUTER LAYER IS LOOSE.*
- *LENGTH - ENDS AT THE WAIST AND LONG SLEEVES.*
 - *COLOUR - DARK BLUE TOWARDS THE BLACK.*
 - *FRONT AND BACK'S FABRIC WORK FOCUSED ON THE NECK*
- *SLEEVES FABRIC WORK IS MORE ON THE NECK BUT GETS LESS TOWARDS THE CUFFS LIKE A GRADIENT.*
 - *LONG RAGLAN SLEEVES.*
 - *RIBBING ON THE CUFFS, WAIST, AND NECK.*
 - *LOTS OF GATHERINGS ON THE NECK.*

