



DIVERSITY

SS24

BRAND - DRIBHARGAVA
DESIGNER - Drishti Bhargava
MODEL - Anyah Sidall
PHOTOGRAPHER - Julia Yatel
VIDEOGRAPHER - Anton Volnyanskyy
STYLIST - Kateryna Loskutova
EDITOR - Dilpreet Kaur
LOCATION - Portugal



CONTENTS

COLLECTION

1. Moodboards
2. Silhouettes
3. Photoshoot
4. Collection Plan
5. Fabrics and finishings
6. Technical Sheets
 - Look 1
 - Look 2
 - Look 3
 - Look 4
 - Look 5
 - Look 6
 - Look 7

LINEAR BIS

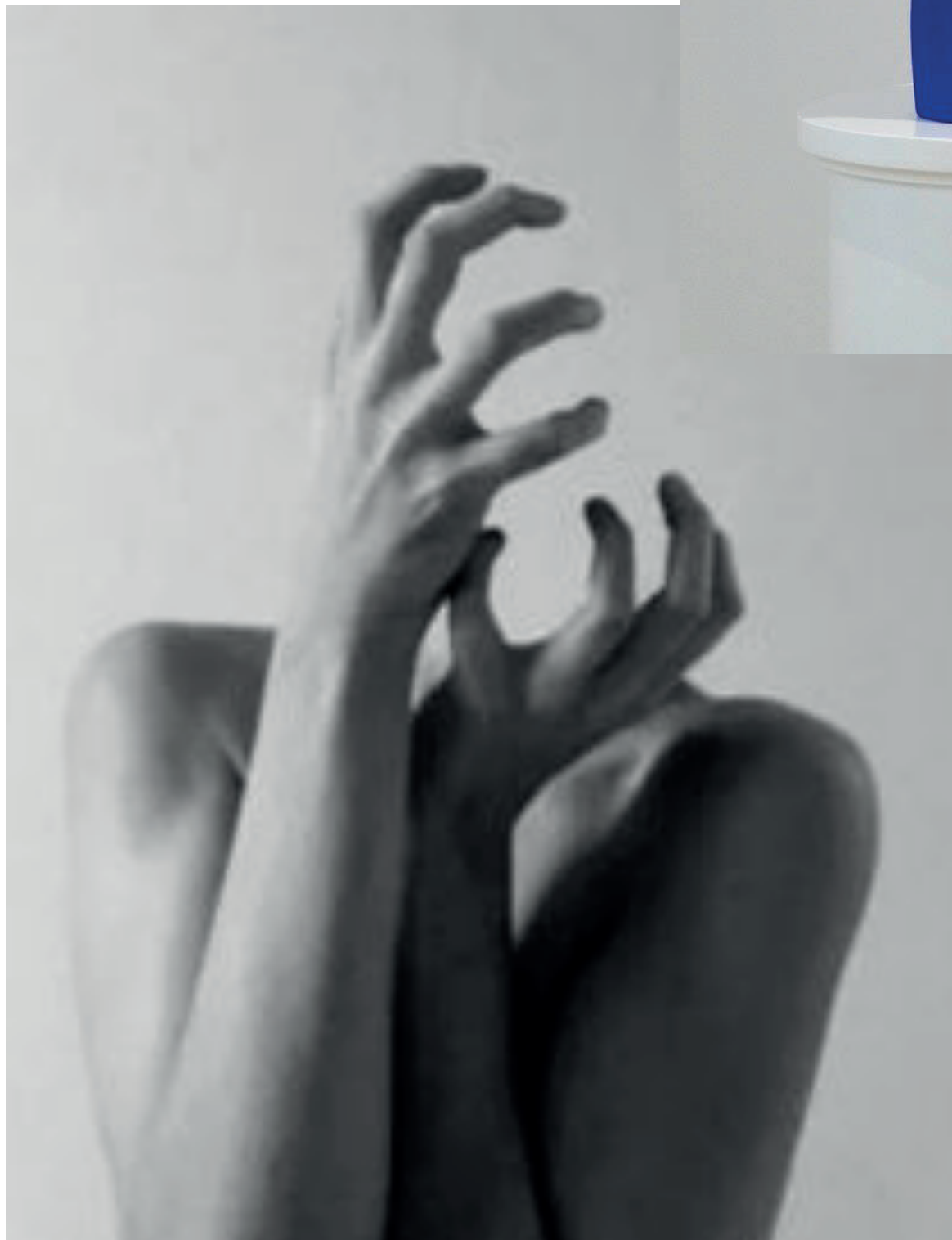
1. Moodboard
2. Silhouettes
3. Collection Plan
4. Fabrics
5. Technical Sheets
 - Look 1
 - Look 2
 - Look 3
 - Look 4
6. MARKETING

“La Vénus d’Alexandrie (Vénus Bleue)”

The blue pigment all over inspired the idea of having the blue colour wrapped around on the bodice. It highlights the diversity of the colour.



Yves Klein is famous for his explorations into pure color—blue in particular. Employing only his signature, patented pigment, International Klein Blue, the artist made iconic monochromes that aimed to bring art into the realm of pure, atmospheric feeling. His practice, which also included sculpture and performances in which nude, paint-covered women served as Klein’s “living brushes,” proved essential in the development of mid-century movements such as Minimalism and Conceptual art



“Something that’s not visible to people does not mean that it does not exist.” - Inspiration to hidden boning structure underneath the Pleats all over.

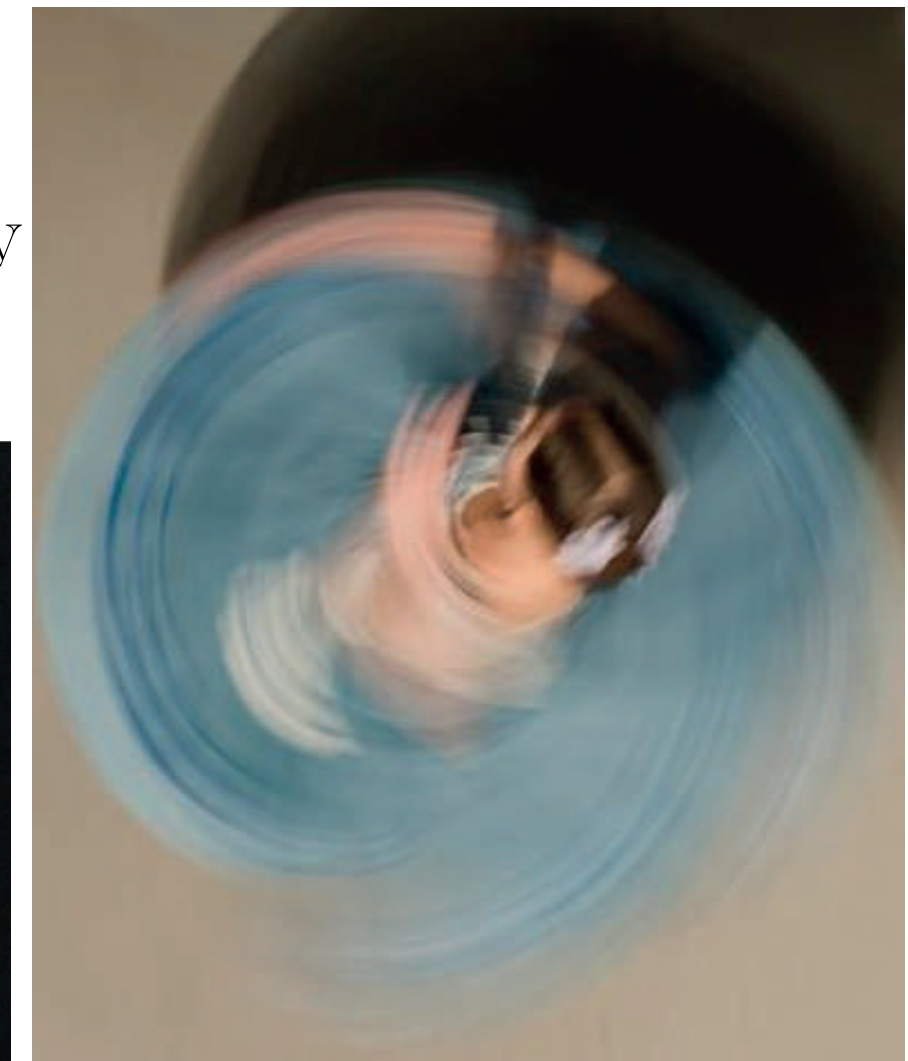


HIDDEN STRUCTURE



TRANSPARENCY

FLOW



MOVEMENT

SHEER FABRICS



Sheerness of the fabric on the structural bodice



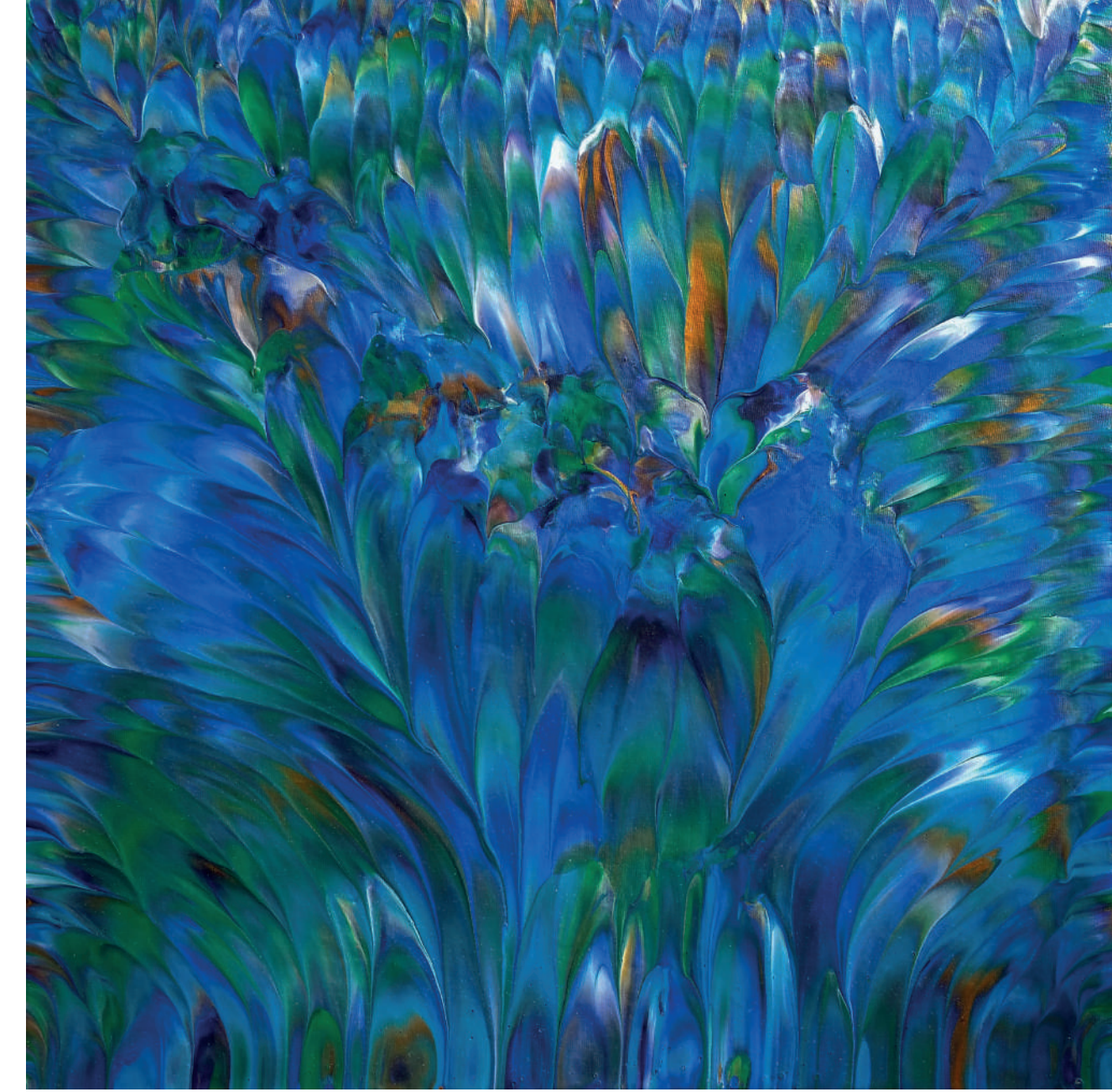
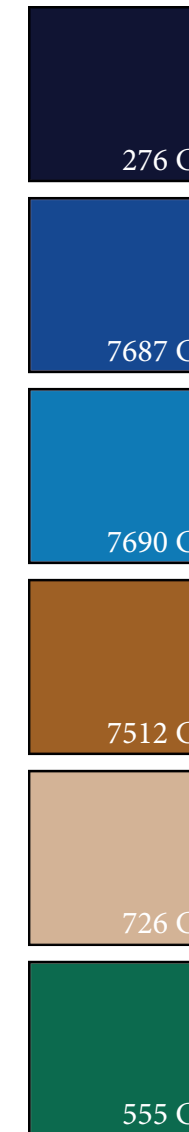
DIVERSITY

With its unique beauty, makes it a handy symbol for **POWER, STRENGTH, CONFIDENCE,** and even **DIVINITY,** something with which most monarchs throughout history have wanted to be associated. This bird has a lot of **DIVERSITY** in its character; hence it can be a symbol of diversity.

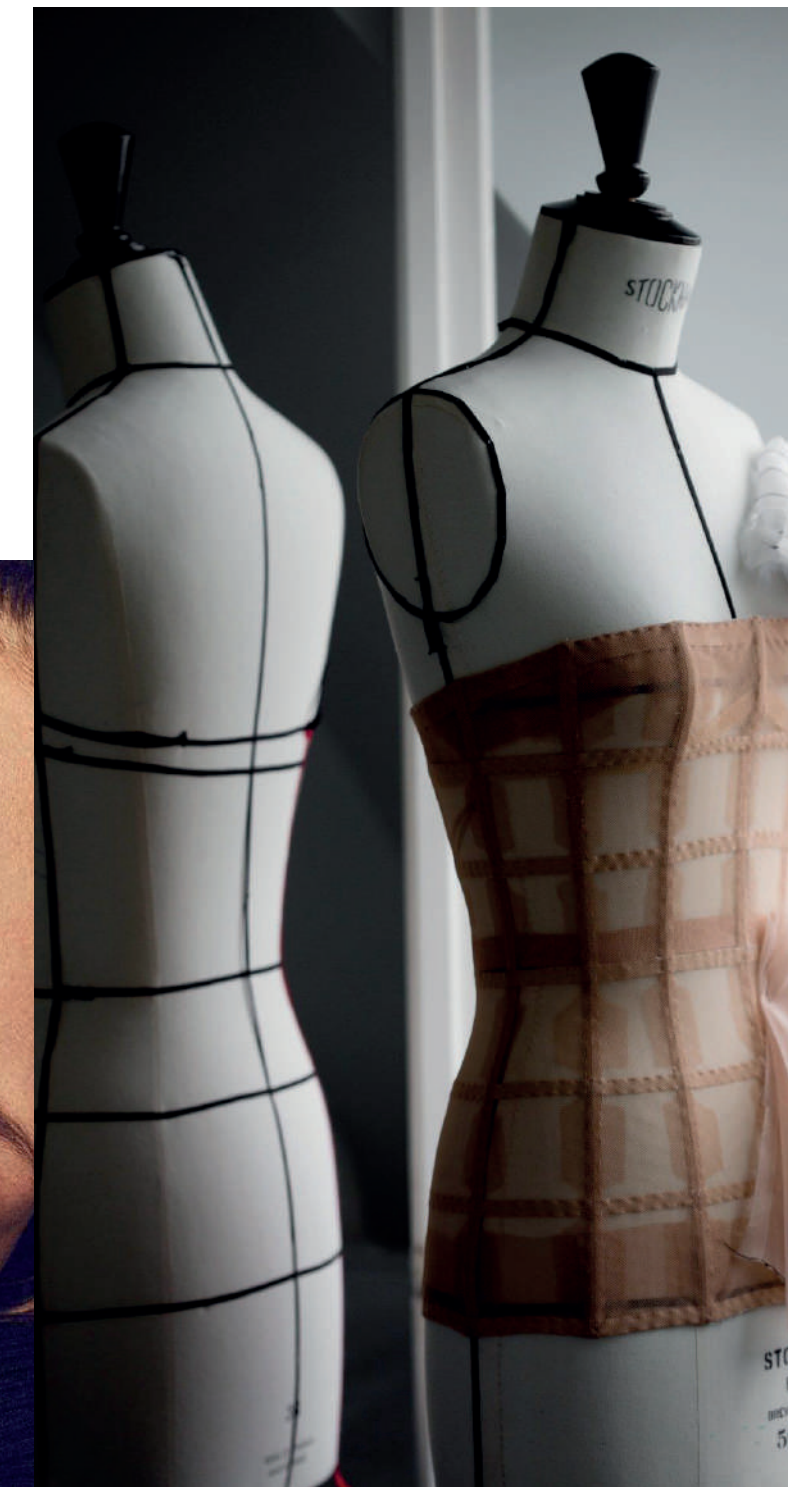
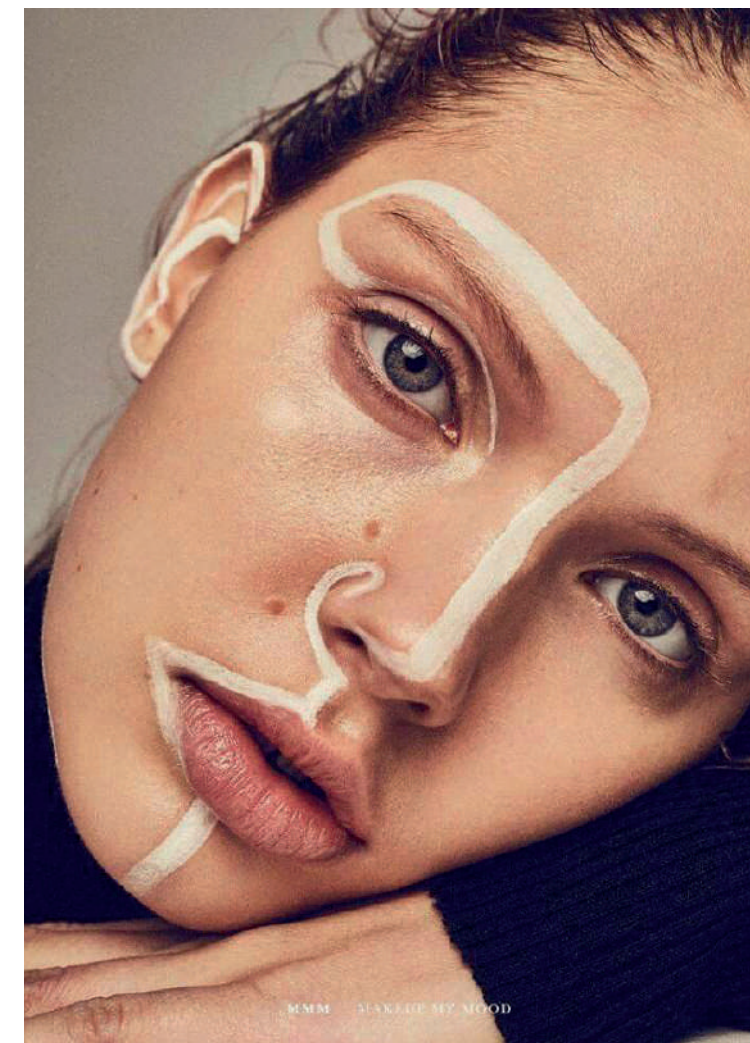


James Nares

In the 1980s, Nares began to paint using brushes of her own manufacture to create monumental stokes that appear almost three dimensional in their detail and depth, recording a gestural passage of time and motion across the canvas.



PEACOCK'S TRAIN
By Alexandra Romano





LOOK 1



DESCRIPTION

- Seamless sides
- Pleats without seams
- Adjustable straps till the back
- Invisible zipper in the left back boning seam
 - 4 boning seams
- Button down seam closure

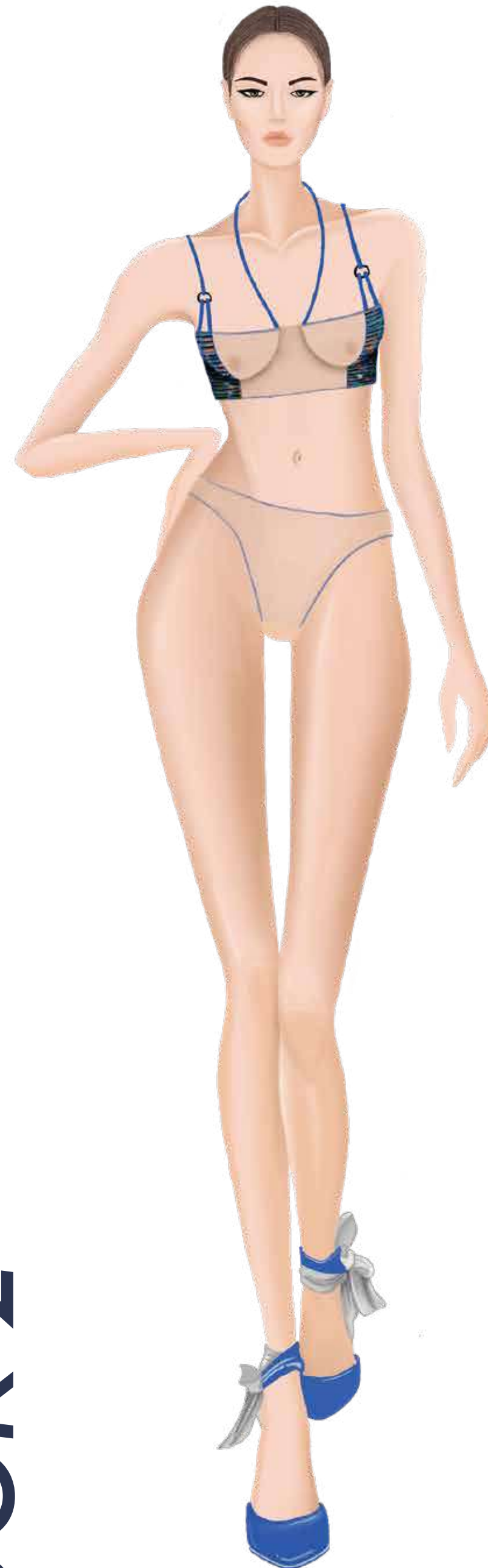


P1



B1

LOOK 2



DESCRIPTION

- Seamless pleats
- Middle strap attached with a hook in the back neck
- 2 small 6mm straps and 1 9mm adjustable strap attached with an anneau till the back
- Hooks and eyes closure in the back

DESCRIPTION

- Pleated band in the back
- Triangle cutout in the back
- French seam in the back



P1



B1

LOOK 3



DESCRIPTION

- Bonnet detail
- Seamless pleats
- Adjustable straps till the back
- Hooks and eyes closure in the back
- French side seams
- 4 boning seams

DESCRIPTION

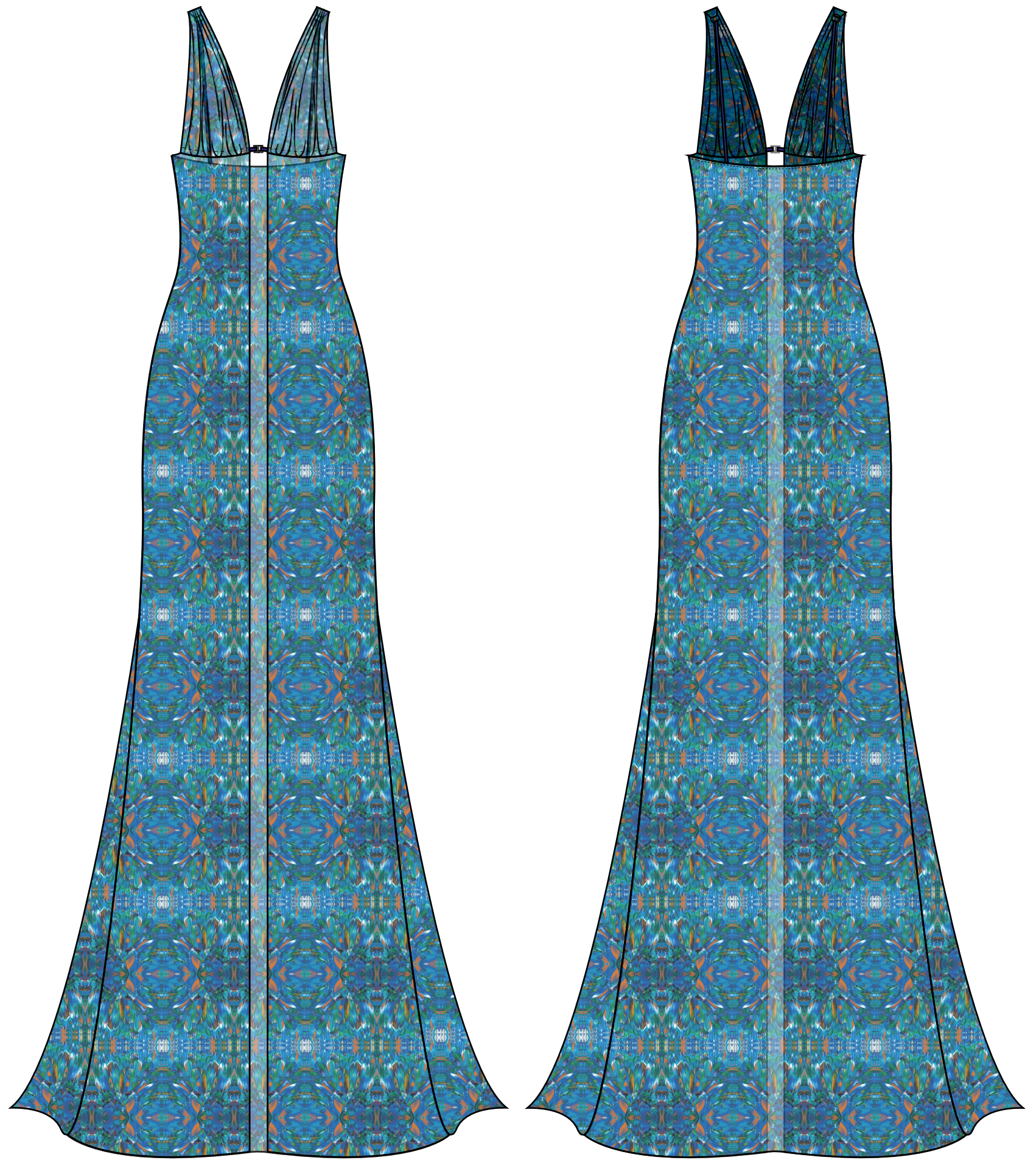
- 2 anneau each in the front and back
- 2 straps on the side on small and big hips



P1



B1



DESCRIPTION

- Floor Length
- Ribbon finishing with double topstitch
- 5mm rolled hem
- Pleated bonnet with elastic finishing
- Anneau attaching bonnet and straps till the back

LOOK 4



DESCRIPTION

- Without basque
- Seam in the middle
- Adjustable straps till the back
- Hooks and eyes closure in the back
- Boning near the closure

DESCRIPTION

- 6 boning seams
- French side seams
- Seamless pleats in different directions
- Hooks and eyes closure in the back

DESCRIPTION

- Pleated band on the right hip

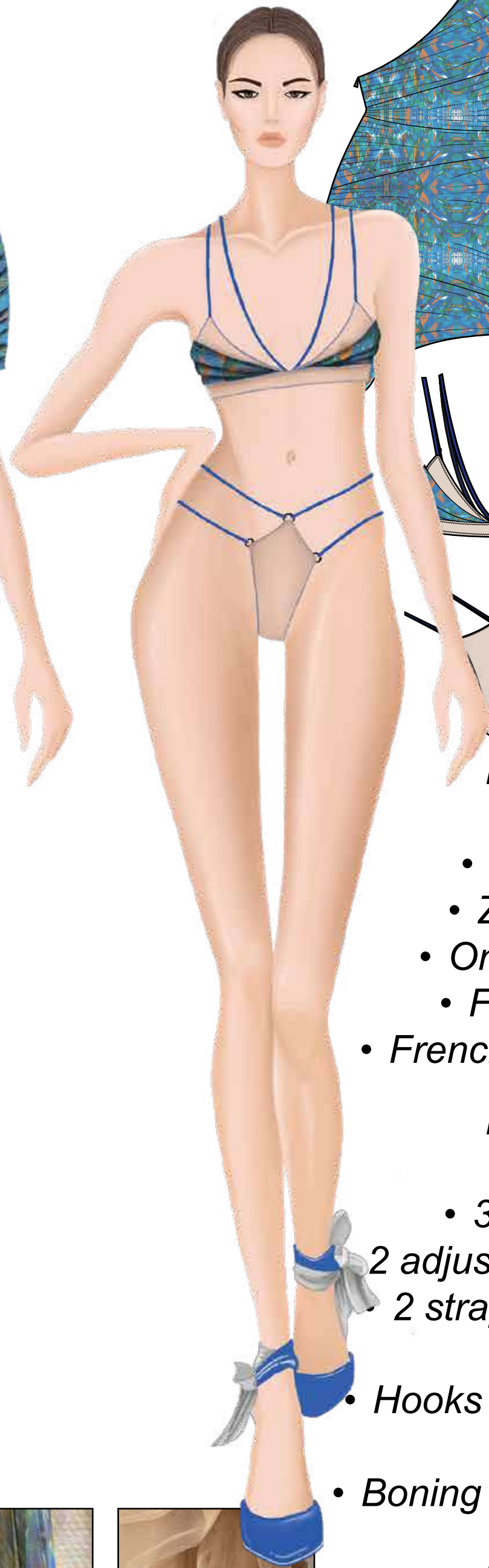


P1



B1

LOOK 5



DESCRIPTION

- Seamless pleats
- Zipper on the side
- One side off shoulder
- French side seams
- French seams on the sleeve

DESCRIPTION

- 3 pleats on bonnet
- 2 adjustable straps till the back
- 2 straps in the middle till the back
- Hooks and eyes closure in the back
- Boning in the back near closure

DESCRIPTION

- Elastic straps till the waist and small hips with anneau



P1



B1

LOOK 6



DESCRIPTION

- Seamless pleats
- Adjustable straps till the back
- Anneau in the front
- Hooks and eyes closure

DESCRIPTION

- Bias finishing



P1



B1

LOOK 7



DESCRIPTION

- Seamless pleats
- Adjustable straps till the back
- Hooks and eyes closure in the back
- 4 boning seams

DESCRIPTION

- Bias band finishing



P1



B1

*"Blue and beige
colour that
reflects water
and sand."*

PANTONE 7687 C

PANTONE 481 C

Yves Klein is famous for his explorations into pure color—blue in particular.

Employing only his signature, patented pigment, International Klein Blue, the artist made iconic monochromes that aimed to bring art into the realm of pure, atmospheric feeling. His practice, which also included sculpture and performances in which nude, paint-covered women served as Klein's "living brushes," proved essential in the development of mid-century movements such as Minimalism and Conceptual art



"La Vénus d'Alexandrie (Vénus Bleue)"



Beachwear

Giant hats

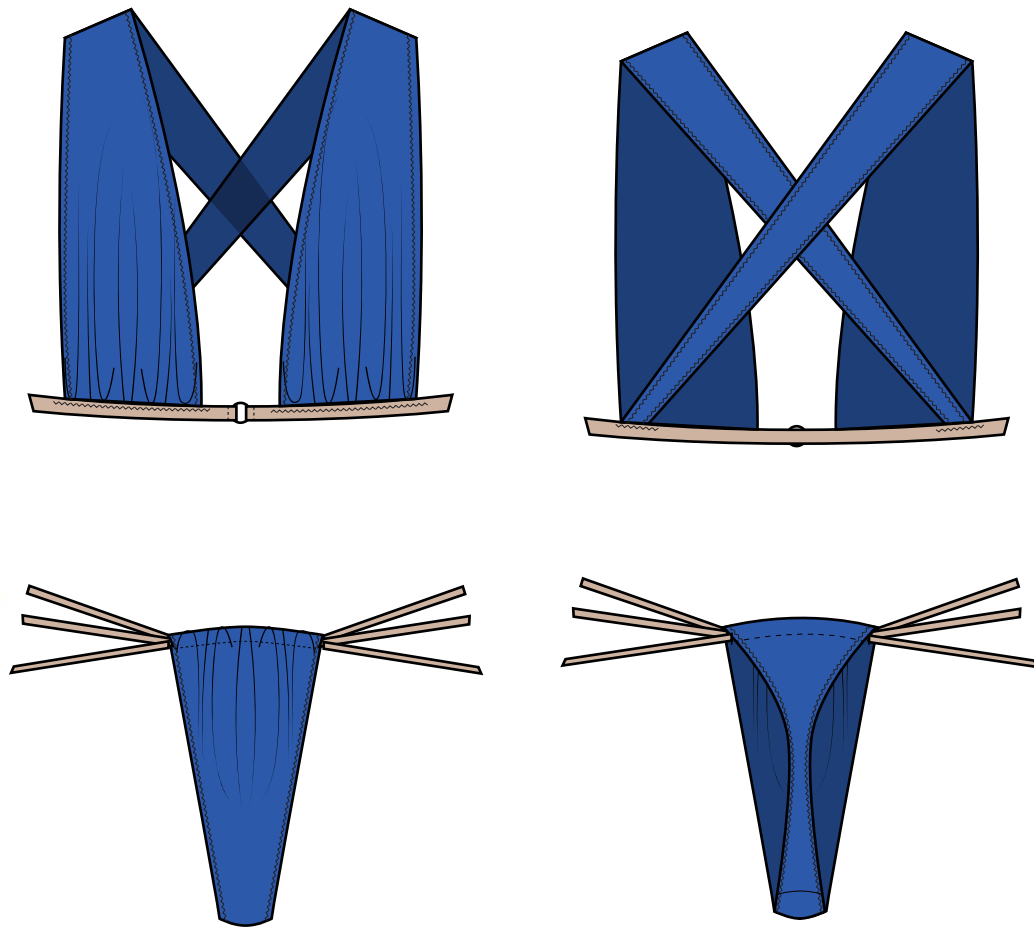


Sheer dresses





LOOK 1



DESCRIPTION

- Gathering on the cup
- Goes till the back in cross
- Band with an anneau in the front

DESCRIPTION

- Thong underwear
- 3 straps on each side till the back
- Gathering in the front

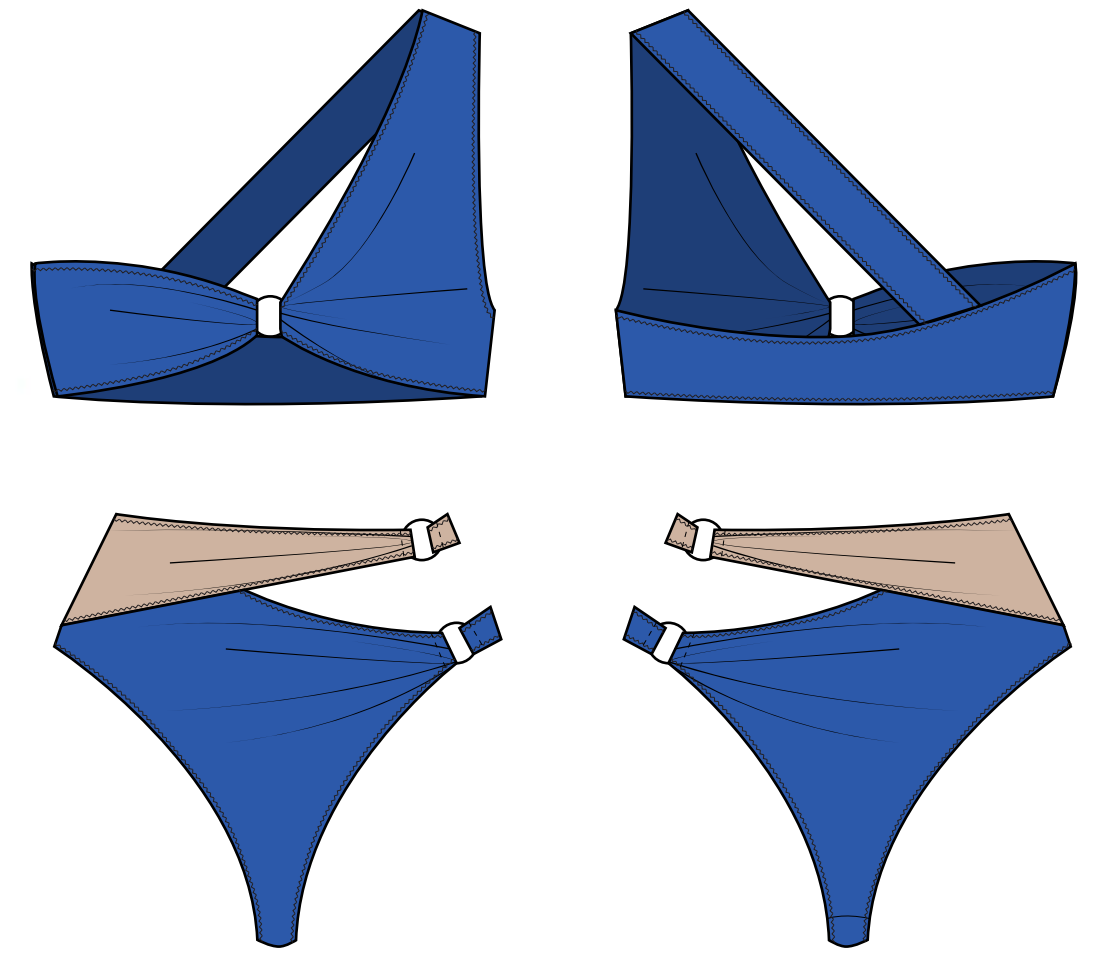


BL



BE

LOOK 2



DESCRIPTION

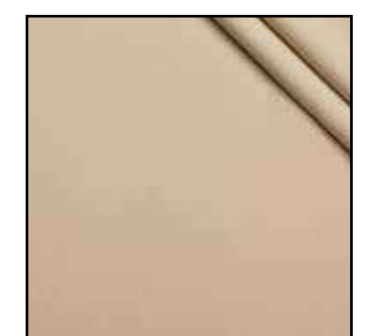
- Assymetrical design with gatherings in the cup
- Bandeau with zigzag finishing
- One side shoulder strap till the back in cross

DESCRIPTION

- Assymetrical design in 2 colours with gatherings
- Beige band on top attached with 2cm Elastic band with an anneau to the back
- Blue band below attached with 2cm Elastic band with an anneau to the back

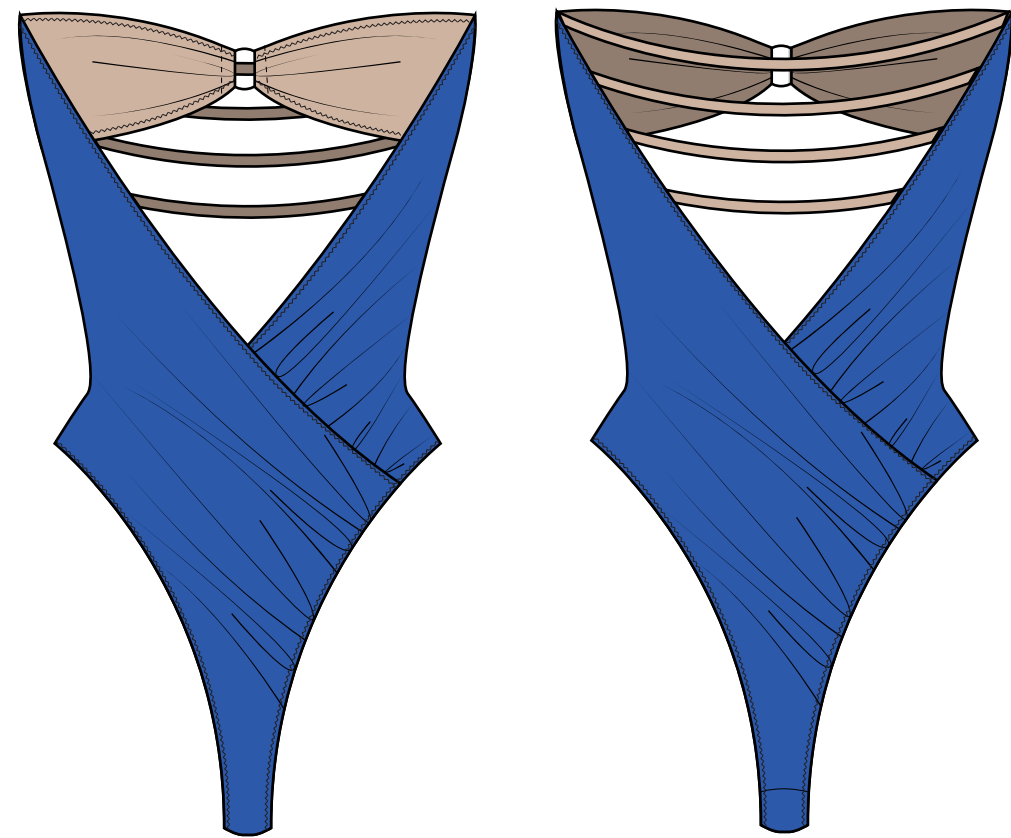


BL



BE

LOOK 3



DESCRIPTION

- *Bandeau cups with anneau in the middle*
- *Layered bodysuit with gatherings*
- *4 elastic bands in the back*

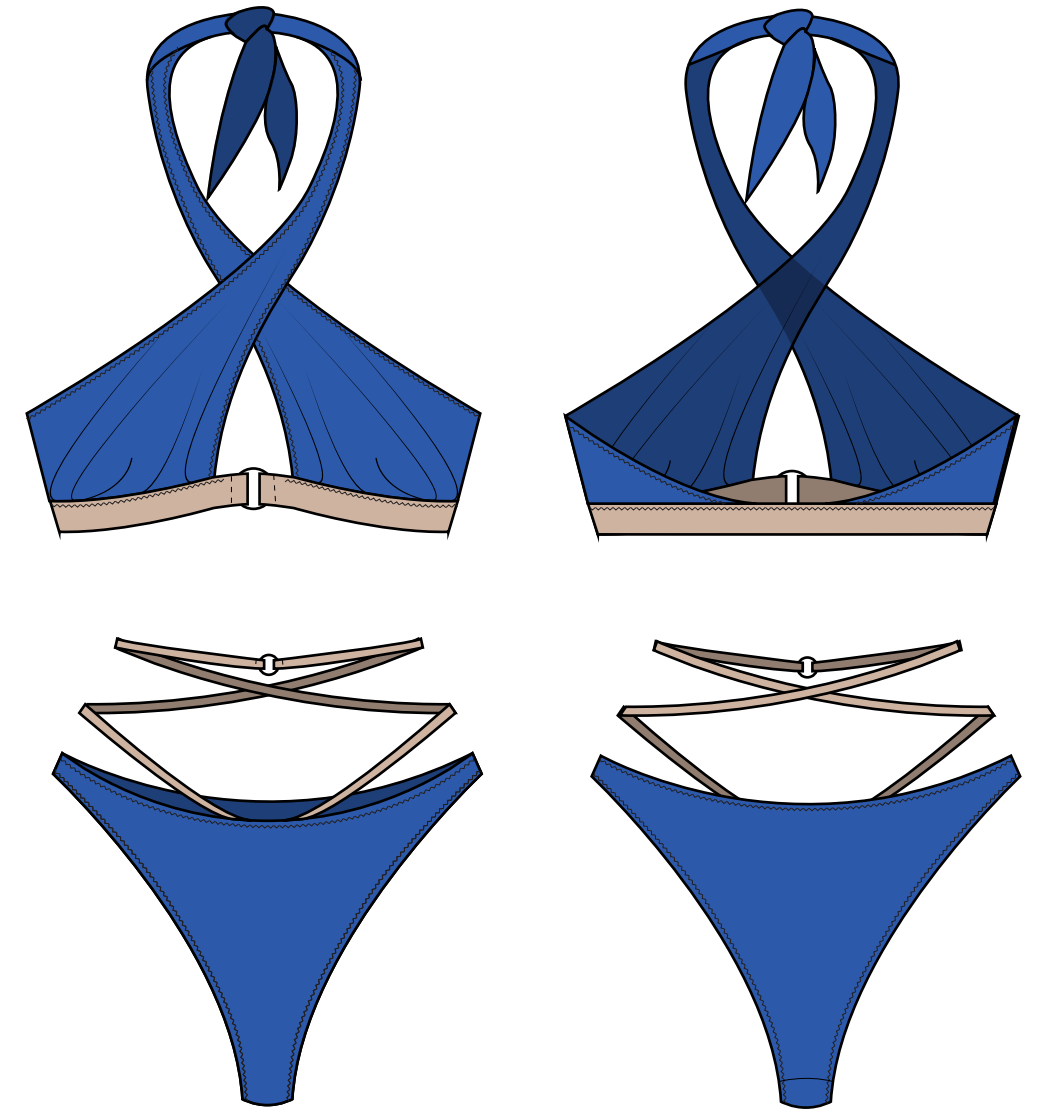


BL



BE

LOOK 4



DESCRIPTION

- *Gathering on the cups*
- *Fixed cups on the Elastic band goes around the neck in cross and ties in the back*
- *Elastic band with anneau in the middle*

DESCRIPTION

- *Elastic straps in criss cross around the body with anneau in the middle*



BL



BE